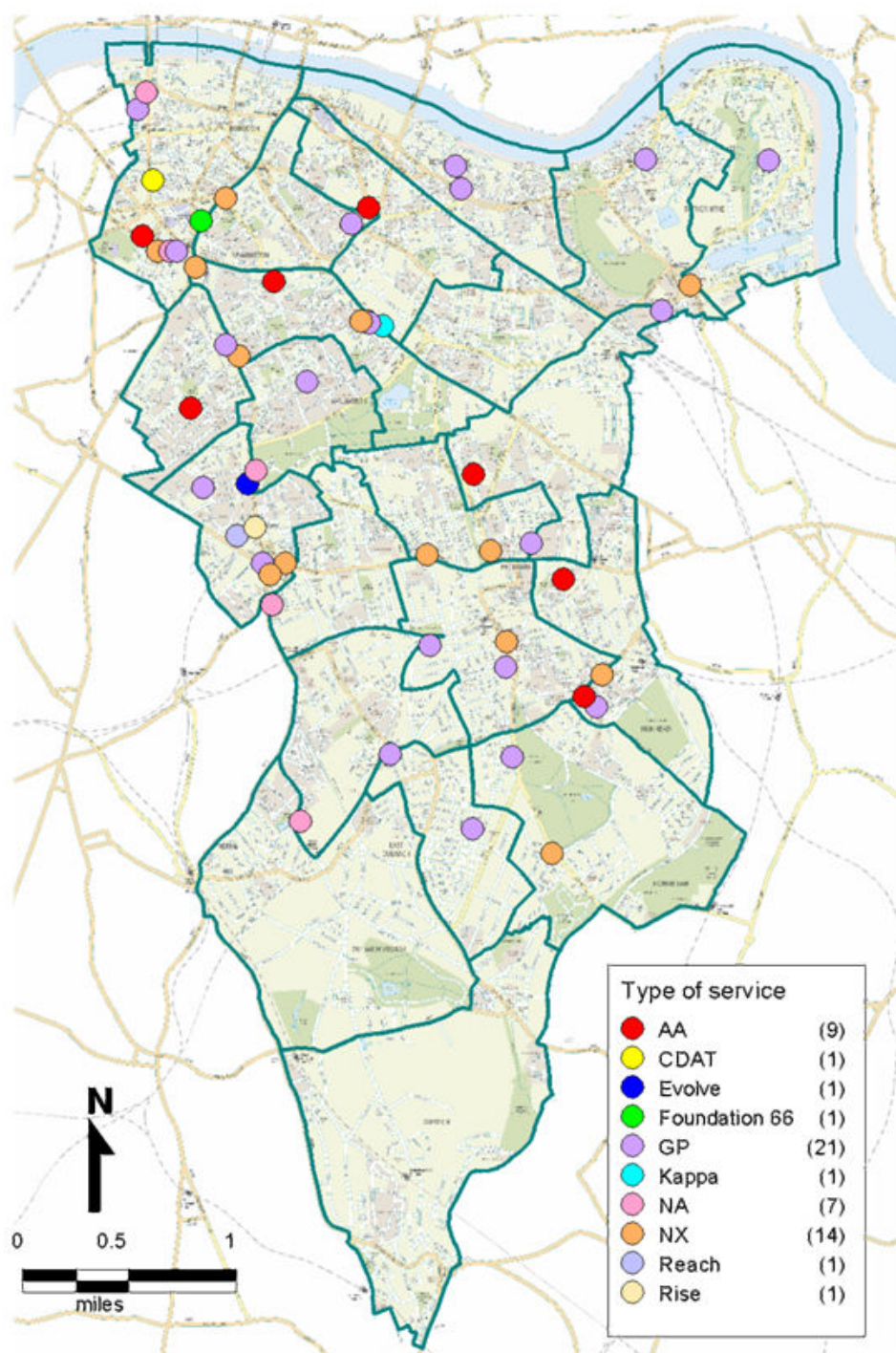


Drug and Alcohol support services (as at 30/09/2013)



(c) Crown Copyright. All rights reserved. ((0) 100019252) 2013

Services Explained

AA – Alcoholics Anonymous are a fully self supporting 12 step fellowship. AA believe that alcoholism is a disease and suggest abstinence for members. AA is fully independent and are not aligned to any treatment system or provider.

CDAT – Community Drug Action Team are DAAT funded to provide recovery, health and substitute prescribing services. CDAT work with complex clients i.e. homeless, dual diagnosis, poly drug users.

Evolve – Are part of Blenheim providers and are a DAAT funded services. Evolve is a low threshold drop in working with stimulant users and more recently party drug/ club drug users.

Foundation 66 – Are a DAAT funded service providing a community based direct access service for alcohol users.

GP – The GP surgeries highlighted here are GP surgeries in Southwark that work under the shared care model in Partnership with KAPPA. Clients will receive substitute prescribing with key-worker support provided by Kappa staff. The enhanced service is DAAT funded.

Kappa – Are part of Blenheim providers and are a DAAT funded service. Kappa is a low threshold drop in working primarily with opiate users. Kappa work in partnership with GP's as per above providing shared care.

NA – Narcotics Anonymous are a fully self supporting 12 step fellowship. NA operates in the same way as AA but is designed to support drug users into abstinence.

NX – represents pharmacists in the borough where needle exchange facilities are available.

Reach – Is the site where the Drug Intervention Programme (DIP) and Reach day programme runs from. DIP is the criminal justice related service designed to engage offending substance users into treatment. Reach is a recovery oriented day programme offering a range of workshops to all substance users.

Rise – Is a structured day programme offering intensive support to help all substance users achieve recovery.